

Sarcoma

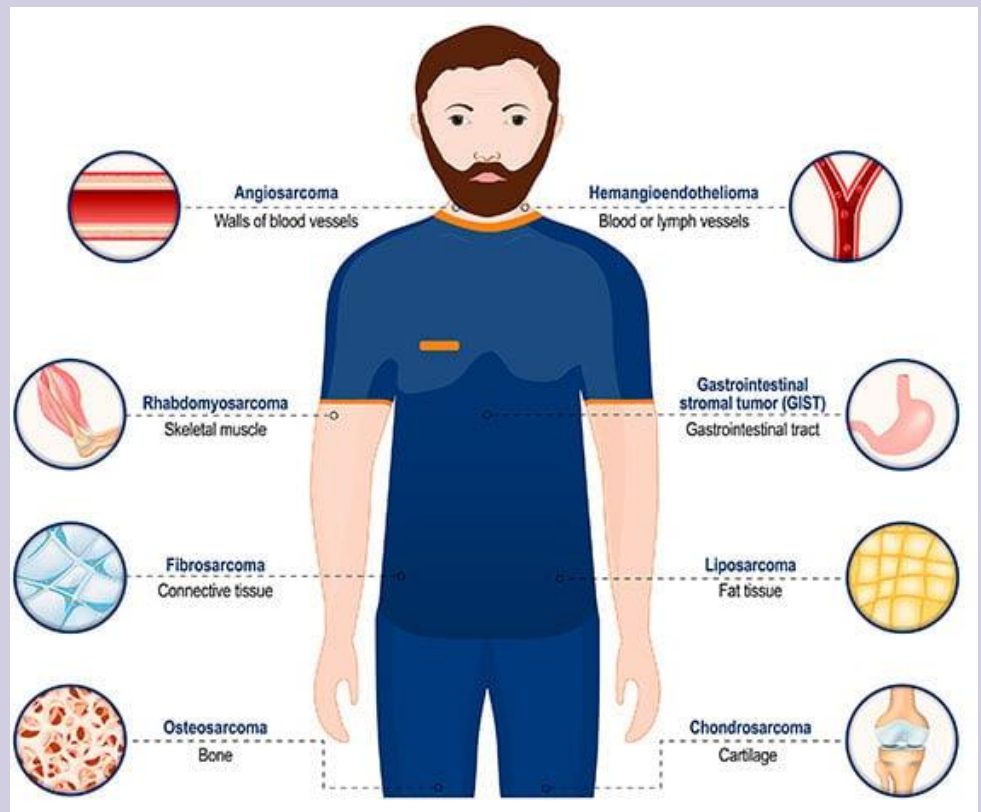
- ❖ Sarcomas are types of cancer that originate in bones and soft tissue
 - Soft tissue sarcoma forms in connective tissue including muscle, fat, blood vessels, nerves and tendons
 - 70+ different types of sarcomas

Symptoms include:

- Abnormal lump
- Bone pain or an unexpected broken bone (minimal to no previous injury)
- Abdominal pain
- Weight loss
- Blood in stool or vomit

Risk Factors include:

- Previous radiation exposure, specific familial gene mutations (including retinoblastoma or neurofibromatosis type I), chronic lymphedema, chemical exposure



<https://www.moffitt.org/cancers/sarcoma/faqs/>

Diagnostic testing includes:

- Physical Exam
- Imaging with X-ray, Ultrasound, CT, MRI or PET scan
- Biopsy – removing suspicious tissue to test cells

Treatment (depending on staging of disease):

- Surgery
- Radiation Therapy, Ablation Therapy
- Chemotherapy, Immunotherapy, Targeted Oral Therapy
 - This can also be used in conjunction with surgery as neo-adjuvant therapy (before surgery) or adjuvant therapy (after surgery)

Resources include American Cancer Society & Mayo Clinic, please see for further information.